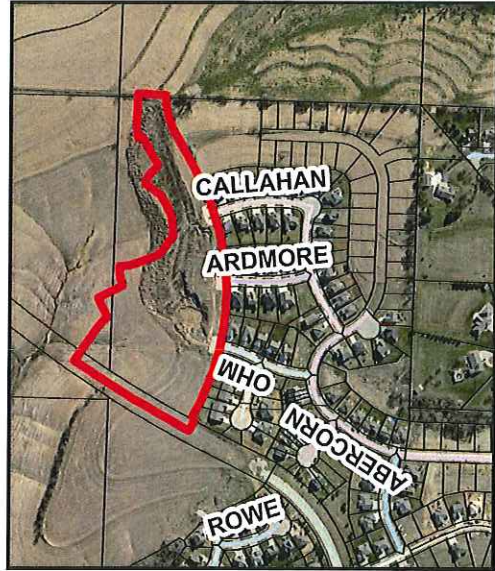
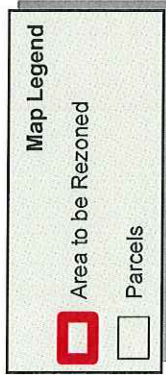
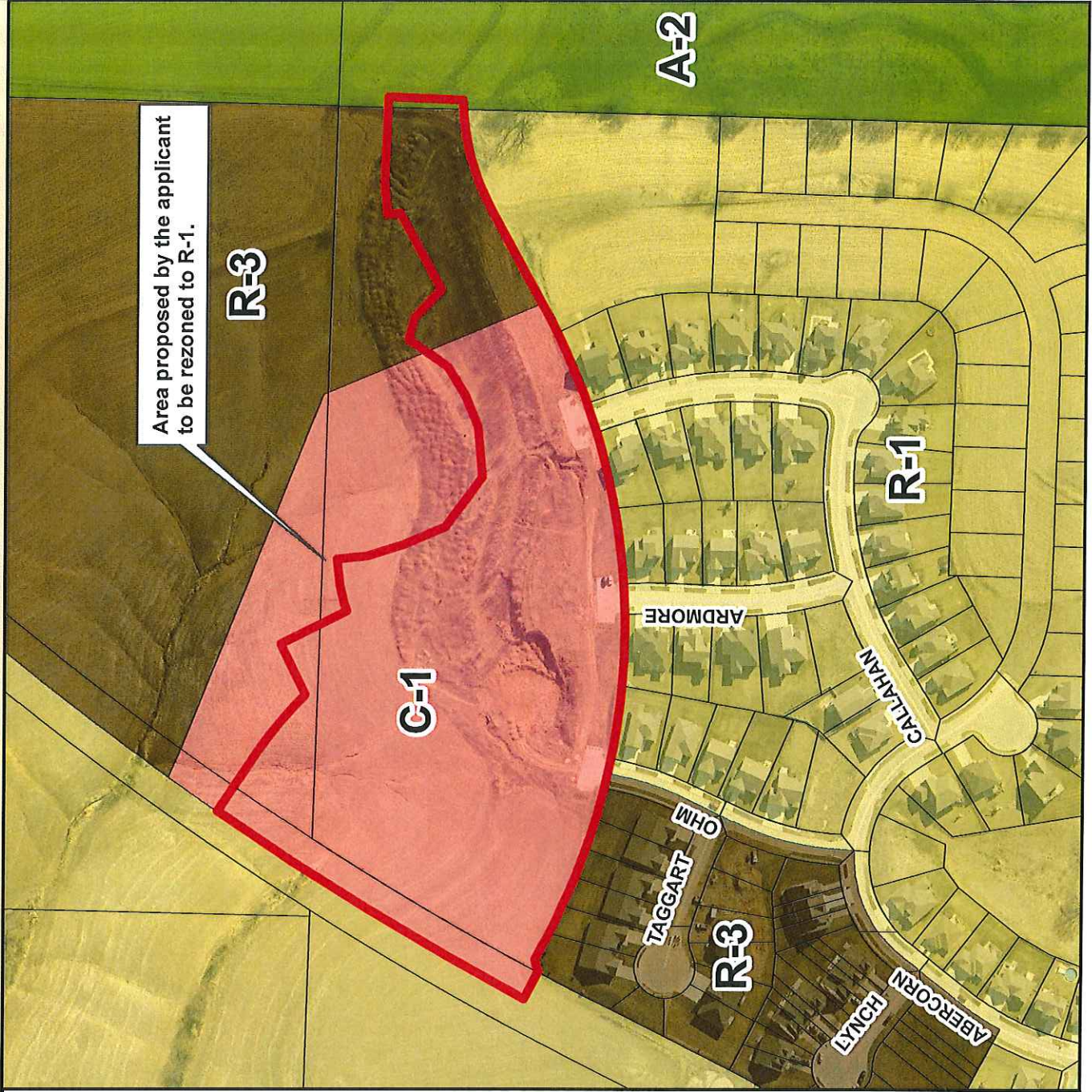


CITY OF COUNCIL BLUFFS - CITY PLANNING COMMISSION CASE #ZC-18-004 LOCATION AND ZONING MAP

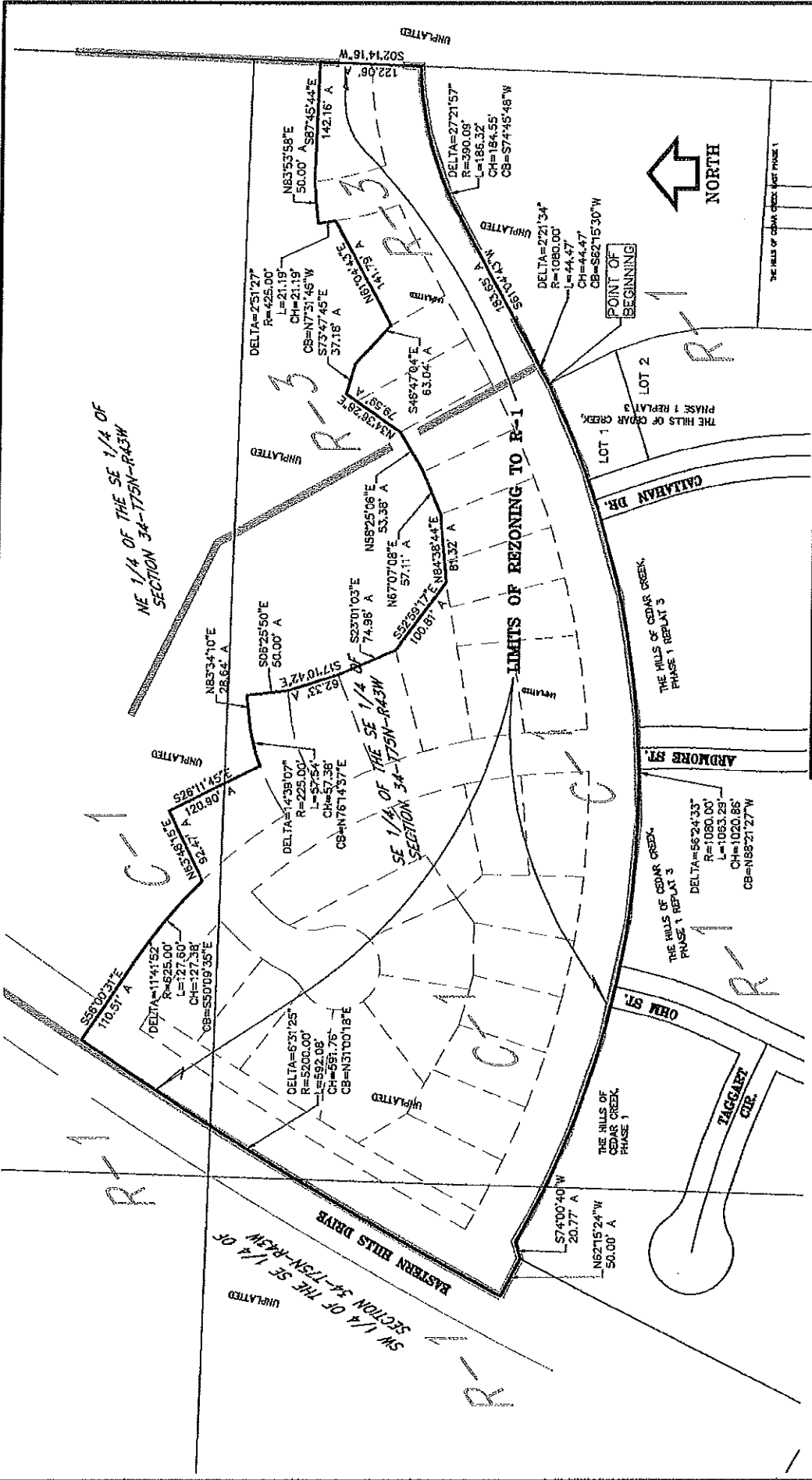


Last Amended: 2/20/18

DISCLAIMER
This map is prepared and compiled from information provided by the City of Council Bluffs, Iowa. Users of this map are hereby notified that the City expressly disclaims any liability for any errors or omissions that may appear hereon. It is the user's responsibility to verify the accuracy of information and to consult with legal counsel for the information contained on this map.

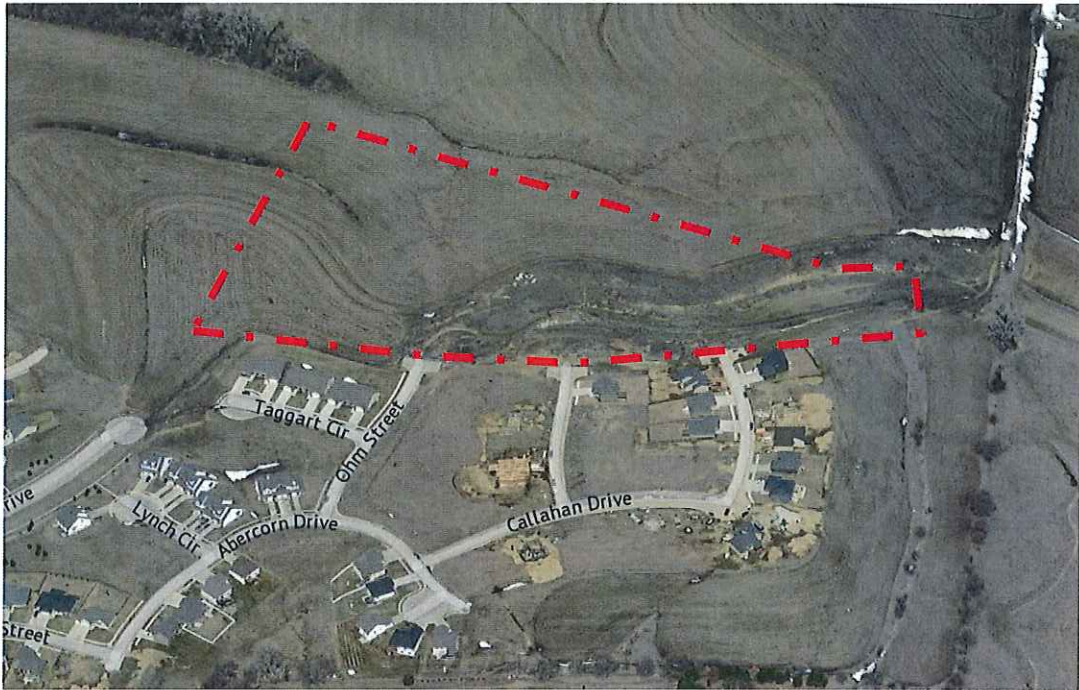
Council Bluffs Community Development Department
209 Pearl Street
Council Bluffs, IA 51503
Telephone: (712) 328.4629

Attachment B



 EHRHART GRIFFIN & ASSOCIATES	Project No. EGA171062	REZONING LOCATION EXHIBIT
	ENGINEERING	PLANNING
142 West Broadway Suite 136 - Council Bluffs, IA 51503 712 / 256-5248		

Site Photos



Aerial Photo, facing North.

*(Approximate area proposed to be rezoned is shown in red)



Ground-Level Photo, facing East from Ohm Street.



Ground-Level Photo, facing West from Ohm Street.